



KINDERGARTEN COSTUME GUIDELINES

For Picture Day,
Dress Rehearsal & Recital:
***No Earrings**
***No Nail Polish**
***No undies under costumes**

K Ballet-Wed 12:30-1:30pm
NOVA
 Teacher: Kaelynne Oliphant
HAIR: 1/2 UP CURLY (SEE BELOW)
TIGHTS: UDA Pink
SHOES: Pink LEATHER Ballet



K Tap -Wed 1:30-2:30pm
AMERICAN BANDSTAND
 Teacher: Kaelynne Oliphant
HAIR: 1/2 UP CURLY (SEE BELOW)
TIGHTS: UDA Tan
SHOES: Carmel Gore Tap Boot



K Ballet- Thurs 9-10am
ANGELINA BALLERINA
 Teacher: Heidi Barton
HAIR: 1/2 UP CURLY (SEE BELOW)
TIGHTS: UDA Pink
SHOES: Pink Canvas Ballet



K Tap- Thurs 10-11am
NEW GIRL
 Teacher: Heidi Barton
HAIR: 1/2 UP CURLY (SEE BELOW)
TIGHTS: UDA Tan
SHOES: Carmel Gore Tap Boot



K Ballet- Thurs 5-6pm
THE WEATHER CHANNEL
 Teacher: Heidi Barton
HAIR: 1/2 UP CURLY (SEE BELOW)
TIGHTS: UDA Pink
SHOES: Pink Canvas Ballet



K Tap- Thurs 6-7pm
GILLIGAN'S ISLAND
 Teacher: Heidi Barton
HAIR: 1/2 UP CURLY (SEE BELOW)
TIGHTS: UDA Tan
SHOES: Carmel Gore Tap Boot



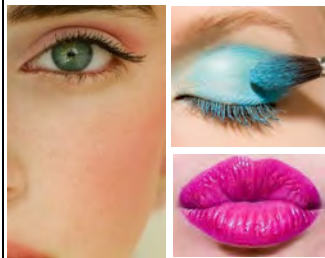
K-1 Ballet- Sat 9-10am
MR. ROGERS
 Teacher: Haley Israelsen
HAIR: 1/2 UP CURLY (SEE BELOW)
TIGHTS: UDA Pink
SHOES: Pink Canvas Ballet



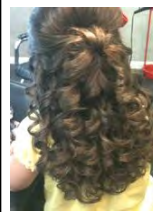
K-1 Tap- Sat 10-11am
GREEN ACRES
 Teacher: Haley Israelsen
HAIR: 1/2 UP CURLY (SEE BELOW)
TIGHTS: UDA Tan
SHOES: Carmel Gore Tap Boot



MAKE-UP



- FACE:** Use matching skin color base, pressed powder, pink blush (*more than you think*)
- EYES:** White shadow below brow line. **BLUE** shadow on the lid. Black eyeliner above lash line. Mascara on lashes. A little liner on the lower lashes.
- LIPS:** **Bright Pink** Lipstick Brand: *Maybelline 24 hour/ 2-step color Super Stay - Reliable Raspberry #010*



HAIR

- Use gel to slick back hair (no part)
- 1/2 pony** placed at the crown of the head (*2 inches up from center of back of head*).
- Tight Curls** using 1/2 inch or smaller or set in rollers. **No hairpieces please.**

SHOES

BALLET SHOES:
UDA Revolution Pink Canvas
GORE BOOT TAP SHOES:
UDA Balero - Carmel

TIGHTS

The UDA required tights, in the correct brand and colors have already been ordered and will be provided with your costume at Costume Distribution unless otherwise indicated. *The cost of the tights was charged to your UDA account in February.*

Accessories

Costumes may come with individual accessories (*such as hair pieces, hats, bows etc.*) Please identify and keep track of your accessories. If you are unsure how to wear a particular accessory, please speak with the teacher of that class.