



LEVEL TWO

COSTUME GUIDELINES

For Picture Day,
Dress Rehearsal & Recital:

- *No Earrings
- *No Nail Polish
- *No undies under costumes

Ballet 2 - Wed 7-8 pm
MADELINE
 Teacher: Marcia McCutchan
HAIR: BUN (SEE BELOW)
TIGHTS: UDA Pink
SHOES: Pink Canvas Ballet

Ballet 2 - Tues 4:30-5:30pm
CHARLIE BROWN
 Teacher: Marcia McCutchan
HAIR: BUN (SEE BELOW)
TIGHTS: UDA Pink
SHOES: Pink Canvas Ballet

No Picture available
Custom Made Costume
 (White and Blue
Lucy dress)

Tap 2 - Wed 6- pm
DUKES OF HAZZARD
 Teacher: Brooke Maxwell
HAIR: BUN (SEE BELOW)
TIGHTS: UDA Tan
SHOES: Carmel Gore Tap Boot

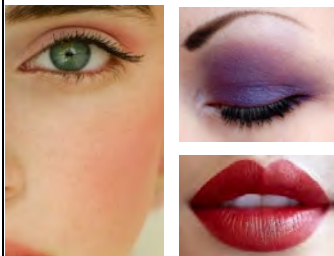
Jazz 2 - Mon 4-5 pm
THE WEATHER CHANNEL
 Teacher: Laura Driggs
HAIR: BUN (SEE BELOW)
TIGHTS: UDA Tan
SHOES: Carmel Gore Boot

Jazz 2 - Tues 5:30-6:30pm
THE LOVE BOAT
 Teacher: Stephanie Dana
HAIR: BUN (SEE BELOW)
TIGHTS: UDA Tan
SHOES: Carmel Gore Boot

HipHop 1-3 - Fri 3-4 pm
SHAKE IT UP!
 Teacher: Moana Aiono
HAIR: BUN (SEE BELOW)
SOCKS: WHITE ANKLE/CREW SOCKS
SHOES: Glitter Shoes (UDA)

Peeps & Company Dancers: Please see program specific guidelines for additional info

MAKE-UP



- **FACE:** Use matching skin color base, pressed powder, pink blush (*more than you think*)
- **EYES:** White shadow below brow line. **PURPLE** shadow on the lid. Black eyeliner above lash line. Mascara on lashes. A little liner on the lower lashes.
- **LIPS:** Bright Red Lipstick
Brand: Cover Girl 24 hour Out-last All Day Lip Color in EVER RED Dye #507

Accessories

Costumes may come with individual accessories (*such as hair pieces, hats, bows etc.*) Please identify and keep track of your accessories. If you are unsure how to wear a particular accessory, please speak with the teacher of that class.



HAIR

- Use gel to slick back hair
- **BUN** should be placed 2 inches up from the center of the back of the head
- Please use a hairnet matching hair color

SHOES

- BALLET SHOES:**
UDA Revolution Pink Canvas
- JAZZ & TAP GORE BOOTS:**
UDA Balero - Carmel or Black
- HIPHOP SNEAKERS:**
UDA Revolution Gray

TIGHTS

The UDA required tights, in the correct brand and colors have already been ordered and will be provided with your costume at Costume Distribution unless otherwise indicated. *The cost of the tights was charged to your UDA account in February.*