



# PREschool BALLET COSTUME GUIDELINES

For Picture Day,  
Dress Rehearsal & Recital:  
**\*No Earrings**  
**\*No Nail Polish**  
**\*No undies under costumes**

**Pre-Ballet - Wed 9-9:45am**  
**DISCOVERY CHANNEL**  
 Teacher: Nicole Maughan  
**HAIR:** 1/2 UP CURLY (SEE BELOW)  
**TIGHTS:** UDA Pink  
**SHOES:** Pink Canvas Ballet

**PreK-Ballet - Wed 9-9:45am**  
**WINNIE THE POOH**  
 Teacher: Leslie Parker  
**HAIR:** 1/2 UP CURLY (SEE BELOW)  
**TIGHTS:** UDA Pink  
**SHOES:** Pink Canvas Ballet

**Pre-Ballet-Wed 11-11:45am**  
**BEWITCHED**  
 Teacher: Leslie Parker  
**HAIR:** 1/2 UP CURLY (SEE BELOW)  
**TIGHTS:** UDA Pink  
**SHOES:** Pink Canvas Ballet

**Pre-Ballet-Wed 12:30-1:15pm**  
**SAY YES TO THE DRESS**  
 Teacher: Laura Driggs  
**HAIR:** 1/2 UP CURLY (SEE BELOW)  
**TIGHTS:** UDA Pink  
**SHOES:** Pink Canvas Ballet

**PreK-Ballet-Wed 12:30-1:15pm**  
**TRAVEL CHANNEL**  
 Teacher: Leslie Parker  
**HAIR:** 1/2 UP CURLY (SEE BELOW)  
**TIGHTS:** UDA Pink  
**SHOES:** Pink Canvas Ballet

**Pre-Ballet-Wed 2:30-3:15pm**  
**CARE BEARS**  
 Teacher: Laura Driggs  
**HAIR:** 1/2 UP CURLY (SEE BELOW)  
**TIGHTS:** UDA Pink  
**SHOES:** Pink Canvas Ballet

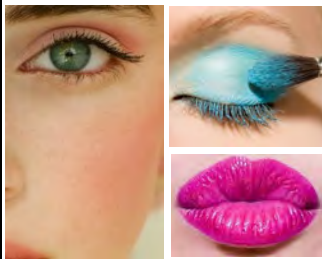
**Pre-Ballet - Wed 4-4:45am**  
**FANTASY ISLAND**  
 Teacher: Ashley Christianson  
**HAIR:** 1/2 UP CURLY (SEE BELOW)  
**TIGHTS:** UDA Pink  
**SHOES:** Pink Canvas Ballet

**Pre-Ballet-Thurs 9-9:45am**  
**MR. ED**  
 Teacher: Julie Jex  
**HAIR:** 1/2 UP CURLY (SEE BELOW)  
**TIGHTS:** UDA Tan  
**SHOES:** Pink Canvas Ballet

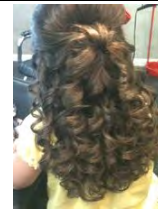
**Pre-Ballet-Thurs 11-11:45am**  
**WONDER WOMAN**  
 Teacher: Julie Jex  
**HAIR:** 1/2 UP CURLY (SEE BELOW)  
**TIGHTS:** UDA Tan  
**SHOES:** Pink Canvas Ballet

**Pre-Ballet- Sat 9-9:45am**  
**THE LOVE BOAT**  
 Teacher: Stacey Kruger  
**HAIR:** 1/2 UP CURLY (SEE BELOW)  
**TIGHTS:** UDA Tan  
**SHOES:** Pink Canvas Ballet

## MAKE-UP



- **FACE:** Use matching skin color base, pressed powder, pink blush (*more than you think*)
- **EYES:** White shadow below brow line. **BLUE** shadow on the lid. Black eyeliner above lash line. Mascara on lashes. A little liner on the lower lashes.
- **LIPS:** **Bright Pink** Lipstick *Brand: Maybelline 24 hour/ 2-step color Super Stay - Reliable Raspberry #010*



## HAIR

- Use gel to slick back hair (no part)
- **1/2 pony** placed at the crown of the head (*2 inches up from center of back of head*).
- **Tight Curls** using 1/2 inch or smaller or set in rollers. **No hairpieces please.**

## SHOES

**BALLET SHOES:**  
*UDA Revolution Pink Canvas*  
**MARY JANE TAP SHOES:**  
*UDA Balero - Carmel or Black*

## TIGHTS

The UDA required tights, in the correct brand and colors have already been ordered and will be provided with your costume at Costume Distribution unless otherwise indicated. *The cost of the tights was charged to your UDA account in February.*

## Accessories

Costumes may come with individual accessories (*such as hair pieces, hats, bows etc.*) Please identify and keep track of your accessories. If you are unsure how to wear a particular accessory, please speak with the teacher of that class.